



## 118 Southwark Park Road, London, SE16 3RP

A recently refurbished and immaculately presented, one bedroom Victorian apartment, located in the heart of Bermondsey, in a very tranquil residential setting. The apartment boasts a naturally bright reception room, a modern kitchen with plenty of storage, a sleek bathroom and a double bedroom. Also featuring a spacious private garden, ideal for alfresco dining and entertaining. Additional storage can be found in the hallway. Residents car parking permits available. The surrounding area features many local amenities such as bars, restaurants, supermarket, the local Bermondsey blue market, convenience store and cafes. The property also has good transport links and is only a walk away from the greenery of Southwark Park.

Share of Freehold  
No Service Charge  
No Ground Rent  
Years on Lease - 98  
Council Tax Band - C

Council tax, property size and, where applicable, lease information, service charges and ground rent are given as a guide only and should always be checked and confirmed by your Solicitor prior to exchange of contracts.

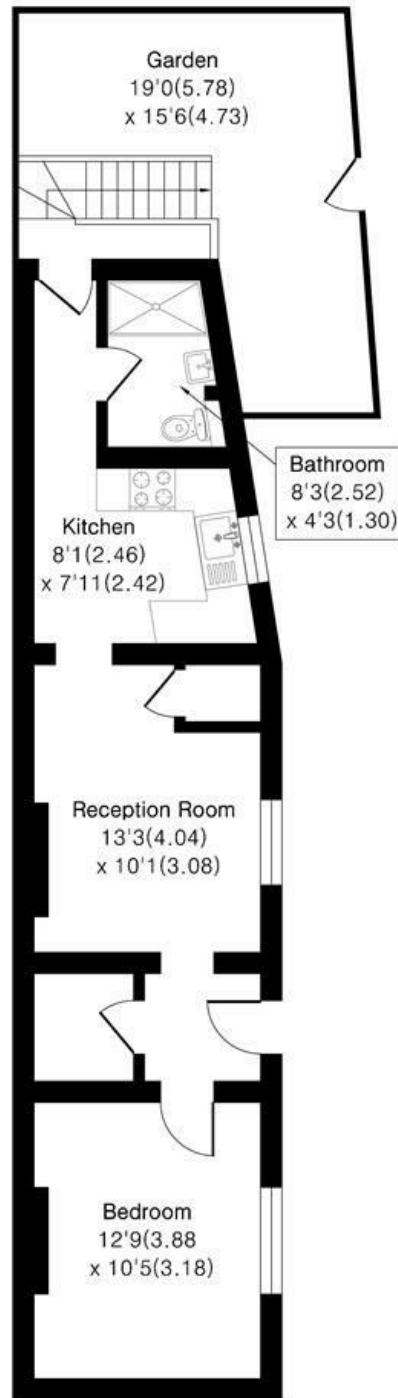
- Share of Freehold
- Chain Free
- Recently Renovated
- Modern Kitchen
- Large Paved Garden
- Prime Bermondsey Location
- Plenty of Storage

**Alex & Matteo**  
ESTATE AGENTS

**Offers in excess of £375,000**



**Southwark Park Road, SE16**  
Approximate Area = 503 sq ft / 46.7 sq m



Floor plan Produced in accordance with RICS Property Measurement 2nd Edition.  
Incorporating International Property Measurement Standards (IPMS2 Residential).  
Produced for Alex & Matteo Estate Agents.

